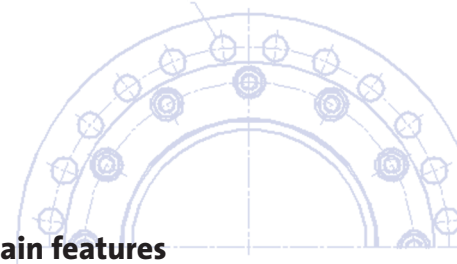
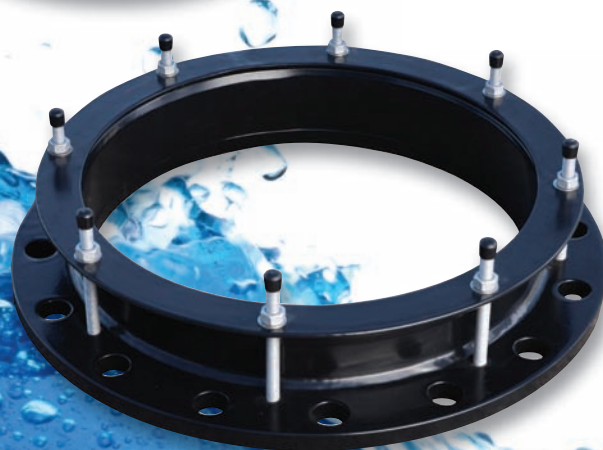
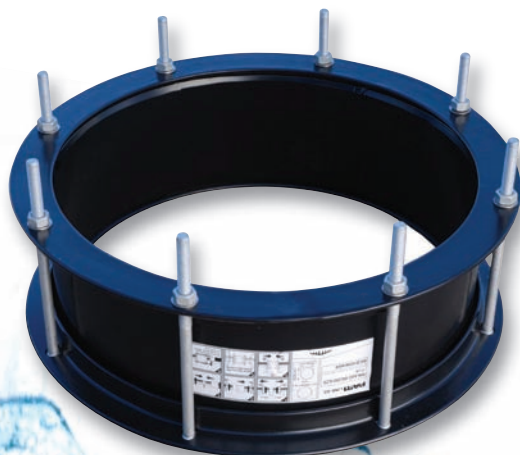




GS range – Dedicated Couplings and Flange Adaptors

DN350 – 2000, PN16 or PN25

Couplings (GSLINK) and flange adaptors (GSQUICK) with low tolerance to suit known pipe OD.



Main features

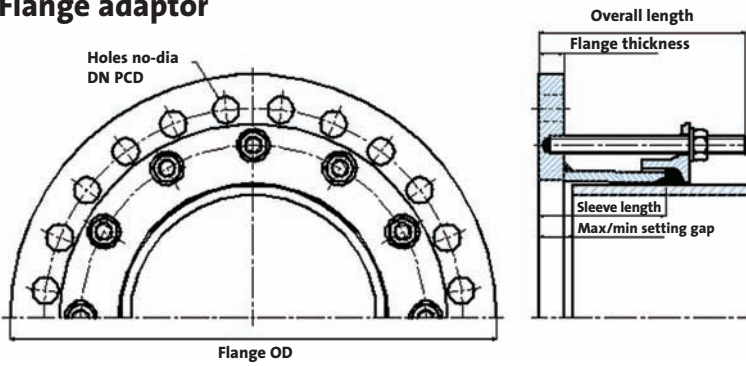
- Standard products to suit ductile iron pipe
- Standard range DN350 – 1200
- Products rated to 16 bar as standard
- Product is delivered with gaskets and bolting supplied loose for ease of installation

Options

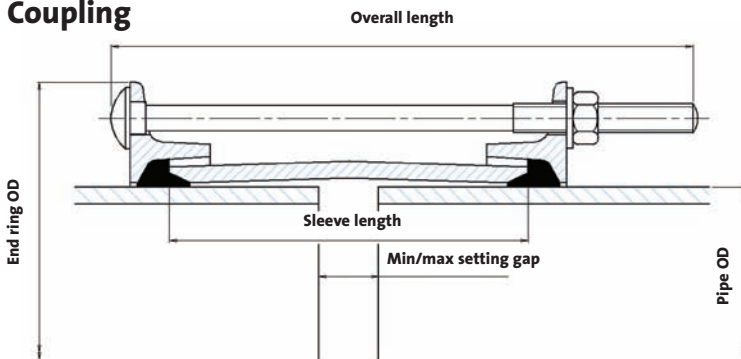
- DN1400 – 2000
- Products for other pipe materials
- 25 bar rated product
- Available with EPDM or Nitrile gasket
- Stepped couplings available on request
- Notched flange adaptors for end restraint

Technical Features

Flange adaptor



Coupling



Coupling and flange adaptor							Flange adaptor						Coupling						
Pipe material	DN	Pipe OD	Tolerance (mm)	Min setting gap (mm)	Max setting gap (mm)	Angular deflection per joint (degrees)	Flange OD (mm)	Holes no-dia (mm)	PCD (mm)	Flange thickness (mm)	Overall length (mm)	Sleeve length (mm)	Studs	Weight (kg)	End ring OD (mm)	Sleeve length (mm)	Overall length (mm)	Bolts	Weight (kg)
DI	350	378	+2.5/-5.5	25	50	1.50	520	16-28	470	18	148	91	8-M12x140	22.5	469	150	243	8-M12x235	21.2
DI	400	429	+2.5/-5.5	25	50	1.50	580	16-31	525	18	148	91	8-M12x140	26.1	520	150	243	8-M12x235	23.7
DI	450	480	+2.9/-4.0	25	50	1.50	640	20-31	585	23	153	96	10-M12x140	34.6	571.5	150	243	10-M12x235	26.2
DI	500	532	+3.5/-4.5	25	50	1.25	715	20-34	650	23	153	96	10-M12x140	42	624	150	243	10-M12x235	29.2
DI	600	635	+3.0/-5.0	25	50	1.25	840	20-37	770	23	153	96	10-M12x140	54.2	726.5	150	243	10-M12x235	34.2
DI	700	738	+3.5/-4.5	25	50	1.00	910	24-37	840	23	153	96	12-M12x140	53.1	830	150	243	12-M12x235	39.6
DI	800	842	+1.0/-7.0	25	50	0.75	1025	24-40	950	23	153	96	12-M12x140	63.3	931.5	150	243	14-M12x235	45.0
DI	900	945	+2.0/-6.0	38	76	0.75	1125	28-40	1050	25	169	112	14-M16x160	91.3	1054	180	276	12-M16x265	88.3
DI	1000	1048	+1.0/-7.0	38	76	0.75	1255	28-43	1170	25	169	112	14-M16x160	111	1156	180	276	14-M16x265	96.8
DI	1200	1255	+1.5/-6.5	38	76	0.75	1485	32-49	1390	38	182	125	16-M16x160	198	1378.5	178	276	18-M16x265	150.0

Materials and coatings

Description	Material	Coating/specification
Sleeve	Steel	Rilsan nylon 11 (WRAS approved)
End ring	Steel	Rilsan nylon 11 (WRAS approved)
Gasket	EPDM	EN 681-1 (WRAS approved) nitrile option available
Bolting	Steel Gr. 4.8	Silver Sheraplex (WIS 4-52-03 approved)
Flange	Steel	Rilsan nylon 11 (WRAS approved)

Saint-Gobain PAM UK Ltd

Lows Lane, Stanton-by-Dale, Ilkeston, Derbyshire DE7 4QU
 Tel: +44 (0)115 930 5000
 Fax: +44 (0)115 932 9513
 Website: www.saint-gobain-pam.co.uk

The information given in this leaflet is, to the best of our knowledge, correct at the time of going to press. However Saint-Gobain PAM UK are constantly looking at ways of improving their products and services and therefore reserve the right to change, without prior notice, any of the data contained in this leaflet. Please contact our Technical Sales Department for detailed advice.

© 2009 Saint-Gobain PAM UK

Technical information

- Bolt torques: M12 = 40-50 lb ft or 55-65 Nm
M16 = 70-80 lb ft or 95-110 Nm
- Maximum service temperature: 60°C



Cert. No. 12908